

# Maxx Ergo Tilter Series

---

## Service and Operating Manual



Lift Products, Inc.

PO Box 349

Elm Grove WI 53122-0349

(Phone) 877-543-8776

(Fax) 262-521-5725

Model: Maxx-Ergo Tilter Series

S/N \_\_\_\_\_

Customer \_\_\_\_\_

## CAUTION:

- Read all operating and safety instructions before operating.
- Tilter should be operated only by authorized personnel.
- Ensure that all operators understand and follow the Warning and Safety Instructions.

## RECEIVING:

Every unit is thoroughly tested and inspected prior to shipment. However, it is possible that the unit could incur damage during transit. Inspect the unit closely when it arrives. If you see evidence of damage or rough handling to either the packaging or to the product when it is being unloaded, immediately make a note of it on the Bill Of Lading. It is important that you remove the product's packaging upon its arrival to ensure that there is no concealed damage or to enable a timely claim with the carrier for freight damage. Also verify that the product and its specifications are as ordered.

## WARNING AND SAFETY INSTRUCTIONS:

Ensure that all employees read, understand and follow the following:

- Read and understand the owner's manual before using or servicing the tilting table.
- Read capacity labels on tilter. Capacity is based on uniformly distributed loads. **DO NOT EXCEED CAPACITY.**
- The load must be removed and the platform positively and adequately supported or fully tilted, before any work is performed on the tilter.
- **DO NOT STAND, SIT, KNEEL OR STEP ON TILTER.**
- Maintenance and repairs are to be done only by qualified personnel
- Ensure that all safety and warning labels stay in place and are legible.
- Do not use the tilting table if any damage or unusual noise is observed.
- Keep all body parts away from under the tilter platform.
- Always watch the platform and the container carefully when the tilter is in operation.
- Do not perform any modifications to Your Maxx-Ergo Tilter. All modifications with respect to safety and usability are the owner's responsibility. Lift Products, Inc. is not responsible for loss or injury by the use of modified units. **Any and all modifications void the warranty.**
- For a typical installation of a standard tilting table you will need a smooth, level and adequately strong concrete surface on which to mount and operate the tilting table.
- Load rating is in pounds, shown on the machine. It indicates the net capacity of the tilter with a static load that is centered and evenly distributed on the platform, Vertical Center of Gravity not to exceed 24" (48" overall height). Avoid tilting top heavy loads. Tilting should only start once the level of the material in the container is less than 32" in height.
- Check for load stability before loading or unloading tilted container or pallet.
- Always center the load against the backstop of the platform to prevent unexpected load shifting when the platform is tilted.
- Contact factory for clarification of safety or capacity concerns.

## **ROUTINE MAINTENANCE & SAFETY CHECKS:**

**WARNING:** *Care should be taken to identify all potential hazards and comply with applicable safety procedures before beginning work.*

(A) Before each use inspect for the following:

1. Oil leaks
2. Damaged or deformed structural members, mounting brackets, ect.
3. Unusual noise or binding, or evidence thereof.

(B) Inspect monthly for:

1. Check pivot points for wear.
2. Check rollers for looseness or wear.
3. Check for cracked welds or other evidence of fatigue.
4. All information, safety and warning labels are in place and legible.
5. Grease all pivot points

## CONTROLS



### FORK POCKETS

Fork Pockets are provided to transport tilt to various locations. Do not transport with load on tilter.

### TILTING CONTROL

The tilt activation levers are located on either side of tilter. Make sure the lowering valve is closed in order to operate the tilt action. The tilt action is approximately one degree per pump.

Always stand to the side when operating the tilt action. Do not stand in front of the tilter while tilting. This is on the "lip" side or direction in which the container is being tilted.

Never exceed capacity of the tilter Do not tilt loads that are larger than the platform size

Do not tilt loads that exceed 48" in height

Always check load for stability before unloading or loading container

Only tilt load as necessary to access container. Adjust as needed for access.

Anchor table to floor through anchor plates provided on base frame if loads exceed 48" in height or loads are unstable at any height. Loads that flow in the direction of tilt, example ball bearings or like products require that the table be anchored.

### LOWERING CONTROL:

Lowering is accomplished by slowly turning lowering lever counter clockwise to lower to desired position or fully lowered.

**CAUTION:** Open lower control slowly when table is loaded to avoid rapid decent.

## LOADING

### *Loading items to container on tilter:*

1. Tilt table to minimum degree of tilt to easy access.
2. Set brakes on all casters if equipped.
3. Place items evenly in container. Avoid placing only toward tilted end of container this could cause instability and result in injury.
4. Always check for stability. Always stand to the side when checking stability.
5. Unstable loads may be strapped or chained down using the holes on the side curbs located at back end of tilter.



## UNLOADING CONTAINERS

- Tilt table to minimum degree of tilt to access load.
- Unload items evenly. Avoid uneven unloading with weight concentrated toward tilt end of container.
- Only tilt container as needed for easy access. Over tilting may cause unstable situation causing container to tip which could cause injury.
- Always check for stability before using.
- Always stand to the side when checking for stability.

### **Tilting UBC Totes or Liquid Filled Containers.**

Tilting containers with liquid material the container **must be at least 75 percent empty before tilting**. Liquid will flow in the direction of tilt and could cause the container to become unstable fall and cause injury.

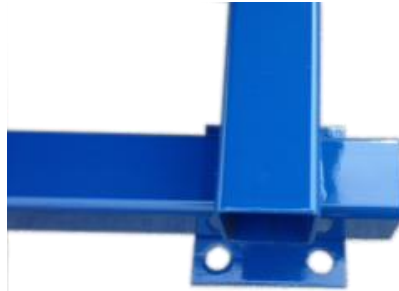
Use tie down holes in side curbs to strap down container.

Always anchor base frame to floor.



## **Anchoring**

It is strongly recommended to anchor the Ergo tilter through floor anchor plates in base frame. In situations where anchoring is not possible make sure loads are stable and do not exceed the capacity of the tilter and no more than 48" in height. It is the users' responsibility to check for stability. Always stand to side of tilter when testing for stability.



## **Casters**

On models that have been purchased with casters the **load should not be tilted until 75% empty**. Load must be no larger than the platform size and must not exceed capacity of the table. Other rules to load and unload are listed above and apply to stationary as well as models with casters.

