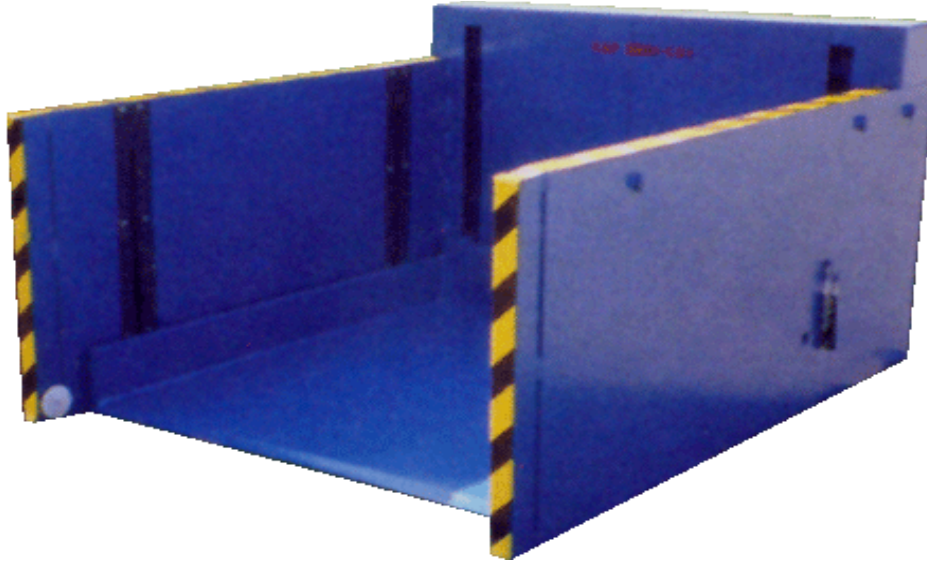


Level Lifter Ground Entry Lift Table Service Manual



LIFT PRODUCTS INC
PO BOX 349
ELM GROVE WI 53122
262-521-5720 FAX 262-521-5725
Toll Free 877-543-8776

Model: Level Lifter's (LL Series)

S/N _____

Customer _____

LIFT PRODUCTS, INC.

SETTING UP THE LEVEL-LIFTER

The level-lifter should be placed on a relatively level surface. Proper power supply with a ground three prong plug should be used. A 20 AMP circuit is recommended.

OPERATION THE LEVEL-LIFTER

Once the level-lifter is in place, remove the transport pins. (See transporting the level-lifter) Place the lift-lower control box in a convenient location. Do not place on the elevation platform. Caution should be used so cords do not cause trip hazard. Push the up or down buttons to move the platform to the desired elevation. Do not place hands or other body parts on or near lift when its operating.

TRANSPORTING THE LEVEL LIFTER

To transport the level-lifter, locate the transport pins on each side of the lever-lifter. Raise the platform several inches to line up the pin with the hole in the side of the platform bed. Insert the pin in each side. It may be necessary to jog the platform up or down using the lift lower switch to allow the pin to line up with the hole. Once this is done make sure the power is disconnected and the control cord is placed on the unit to prevent damage. A pallet truck or lift truck may be used to relocate the level-lifter to another area. Lift only a few inches in order to transport. **IMPORTANT: DO NOT TRANSFORM LEVEL-LIFTER WITH LOAD ON PLATFORM.** Once the level-lifter is relocated remove the pallet truck plug in power cord and remove transport pins. To lower platform to the floor it may be necessary to very slightly jog the lift lower buttons up or down in order to pull out pins from platform. You are now ready to operate the level-lifter (safety tips should be read first before actual operations).

Safety Tips

- KEEP HANDS AND FEET AWAY FROM UNIT WHEN IN OPERATION
- KEEP HANDS, FEET OR ANY OBSTRUCTION FROM UNDER PLATFORM
- DO NOT OVERLOAD, OBSERVE CAPACITY LABEL ON UNIT
- HAVE REGULAR MAINTENANCE PERFORMED ON UNIT (SEE MAINTENANCE SECTION)

TROUBLE SHOOTING THE LEVEL-LIFTER

PROBLEM: PLATFORM WILL NOT LIFT

POSSIBLE SOLUTIONS:

- No power to unit
- Transport pins were not removed
- Lift Limit cutoff switch is stuck or defective
- Hydraulic leak or low oil level in tank
- Pump motor or pump is defective

IMPORTANT: DO NOT TAMPER OR ADJUST HYDRAULIC VALVE, MAY CAUSE DAMAGE OR FAILURE: CONTACT FACTORY

PROBLEM: PLATFORM WILL NOT LOWER

POSSIBLE SOLUTIONS:

- No power to unit
- Photo-eye is obstructed
- Photo-eye target is dirty
- Photo-eye is defective
- Transport pins were not removed

NOTE: IT IS IMPORTANT THAT THE PHOTO-EYE IS CHECKED FOR PROPER OPERATION BEFORE USE. TO DO THIS RAISE PLATFORM ABOUT ONE FOOT, PLACE BOX OR OTHER PARTICLE TO OBSTRUCT VIEW OF PHOTO-EYE. PUSH LOWER BUTTON ON CONTROL BOX, IF THE PLATFORM LOWERS DISCONTINUE USE UNTIL REPAIR IS MADE.

MAINTENANCE SCHEDULE

There are relatively few items requiring maintenance on the level lifter ground entry lift table. All initial settings are made at the factory.

LIFT CABLE: 1/4" GALVANIZED, 6 x19

Cable should be inspected on a periodic basis for signs of wear. Cables should have approximately 1/4" of play. Adjust tension by loosening jam nut on eye bolt, tighten and reset jam nut. Adjustment should be made with platform fully lowered and the unit on as level of a surface as possible. When less than 1/2" of adjustments remains, it is recommended that all cables be replaced as a set. Grease may be applied to cables to help prolong lift. Cables are accessible through rear panel as well as access covers at each lift point. when replacing the cables adjust tension as stated above. Place a load equal to the capacity and raise and let stand overnight re-tension if needed

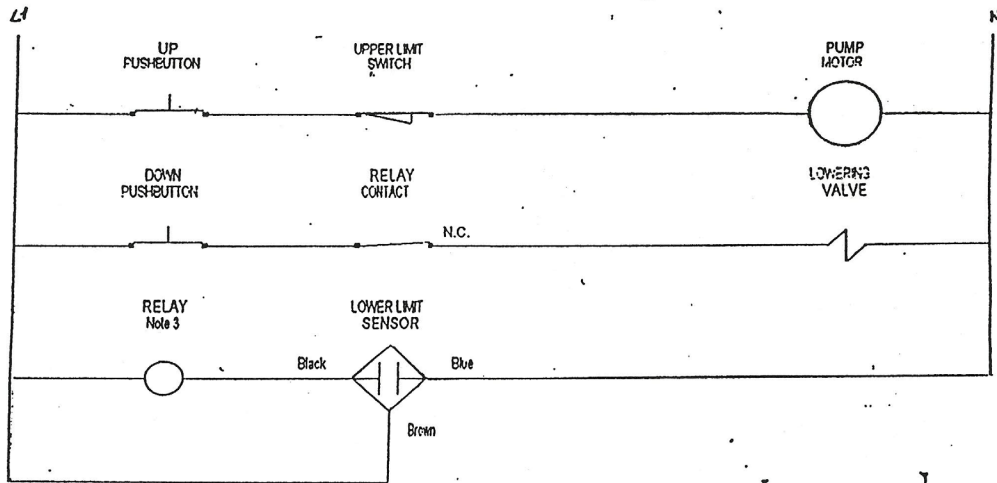
HYDRAULIC SYSTEM:

During periodic inspection, check for leaks. It is recommended that hydraulic reservoir be drained annually. Filter screen should be cleaned at this time in parts solvent. Replace hydraulic fluid to within 1" of top.

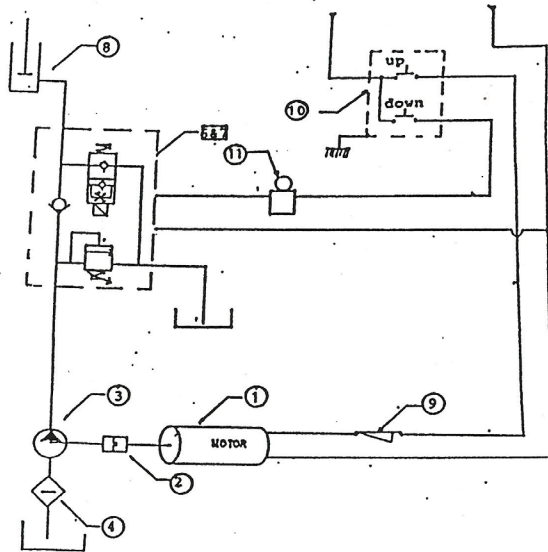
NOTE: Petraulic #46 Hydraulic oil is furnished with unit. After 1 year of operation, SAE #10 viscosity of 200 may be used.

LUBRICATION:

All brushings are oil impregnated requiring no additional lubrication. Bushings and pulleys should be inspected periodically for wear and alignment.



1. MOTOR
2. COUPLING
3. PUMP
4. FILTER
5. RESERVOIR
6. HYD. MANIFOLD
7. FLOW CONTROL
8. CYLINDER
9. LIMIT SWITCH
10. CONTROL
11. PHOTO EYE



LIFT CONTROL CIRCUIT

**LEVEL LIFTER
PARTS LIST**

| QUANTITY | PART # | DESCRIPTION |
|---|----------------------|-----------------------------|
| HYDRAULIC | | |
| 1 | 55-200 | MICRO FILTER |
| 1 | 3.5-13.5 | CYLINDER 25" LIFT |
| 1 | 3.5-16 | CYLINDER 30" LIFT |
| 1 | DE302200003 | PUMP |
| 1 | DE80500R3 | SOLENOID |
| 1 | 12" | HIGH PRESSURE HOSE |
| 1 | 25" | 1 HP HIGH PRESSURE HOSE |
| 1 | 30" | 1-1/2 HP HIGH PRESSURE HOSE |
| 1 | 28901-103-3 | HYDRAULIC FUSE |
| ELECTRICAL | | |
| 1 | 1-1/2 | MOTOR |
| 1 | 50DA3NP | PUSH BUTTON |
| 1 | 632-STWIN | FOOT SWITCH |
| 1 | B2E6-2 RN | TOP LIMIT SWITCH |
| 1 | CP18LBAD2 | ELECTRIC EYE |
| 1 | CP218RAW | RIGHT ANGLE REF |
| 1 | 1-1A489E | RELAY |
| 1 | 5278C | INLET |
| 1 | 09811 | COIL CORD |
| 1 | HHC1022 | COIL CORD CONNECT |
| 1 | 45EG20AF | CONTACTOR |
| MECHANICAL | | |
| 13 | 150-6417 (25-3000LB) | PULLEY |
| 13 | 150-6421 (35-4000LB) | PULLEY |
| 8 | MBS-11 | BRUSH STRIPS |
| 8 | 0080 | BRUSH HOLDERS |
| (OPTIONAL) LEVEL LIFTER II 3.5-16 CYLINDER A-1 PUMP | | |